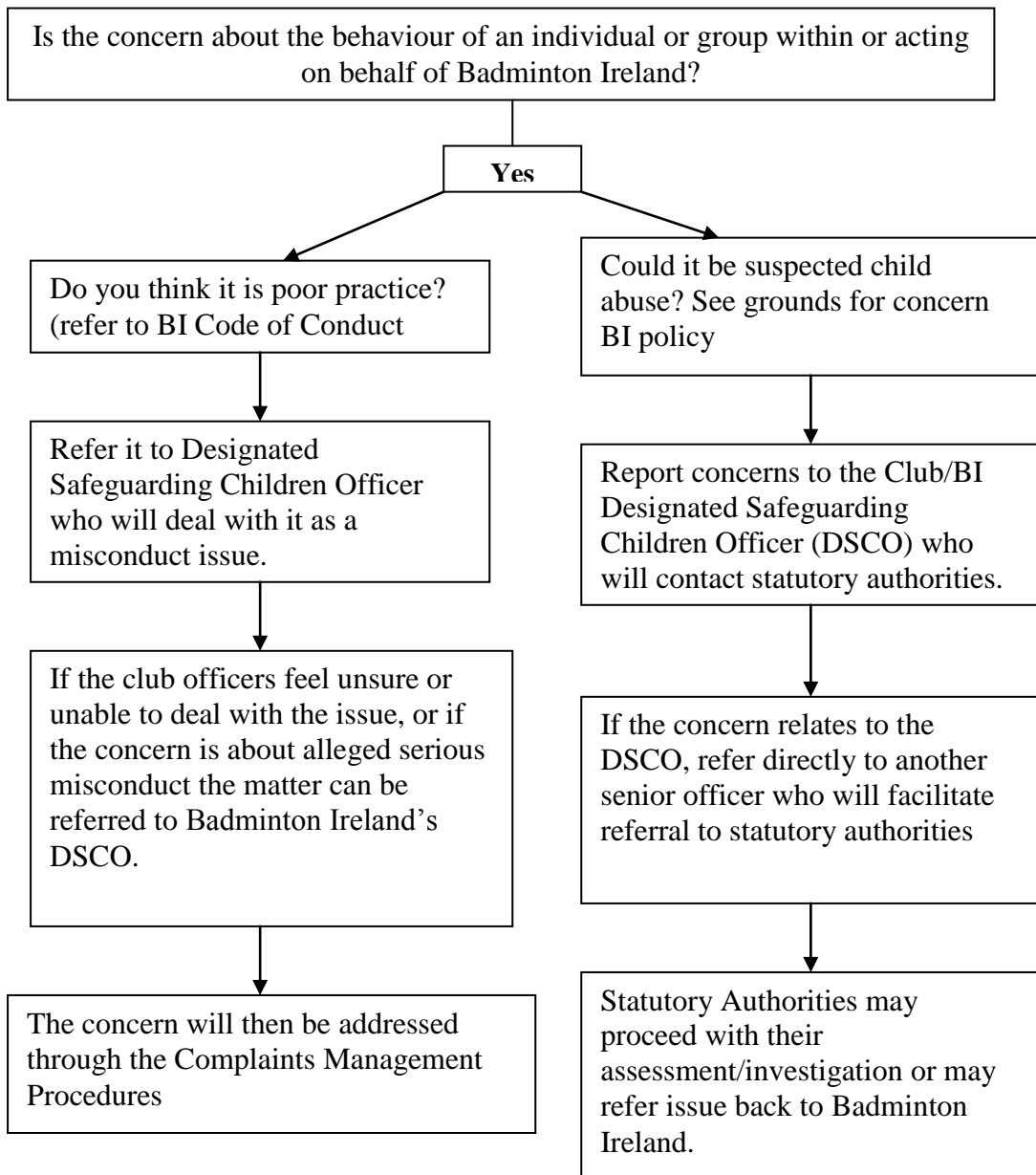




### Procedure if there is concern about the behaviour within the organisation.



Badminton Ireland may have to impose restrictions on individuals while internal or external processes are taking place. Badminton Ireland may also have to take internal action regardless of the outcome of the external process.

Disciplinary process – (possible referral ISA for those operating in NI)

If, at any stage, you are concerned that a child is in immediate danger you should contact the Gardai/PSNI or Statutory Authorities.

